

# Curfew E-Pass Management System

Sagar Navadiya , Jeet Ponkiya , Raj Ponkiya , Rutvij

Thummar

Parul University

Submitted: 25-09-2021

Revised: 01-10-2021

Accepted: 05-10-2021

## ABSTRACT

A Curfew indicates a period during which certain guidelines apply. Ordinarily it alludes to when people are required to come back to and remain in houses or homes. Curfews are an ordinary territory of control utilized in military law, in any case curfews can in like way be executed for open prospering if there should rise an event of a crisis or emergency.

A Curfew Pass is a record given by an engaged position, for example, police or military for open authorities or common people to make a trip inside or to and from a zone under a curfew by the said power. The Management of Curfew e-Pass system is an electronic innovation that will manage the records of pass which issue by definitive. This system is a modified structure that conveys information preparing in a fast and conscious manner.

In Management of Curfew e-Pass system, PHP for

backend and MySQL for database are used. This is the system which produce and keep record of the pass which is issued by regulatory. The Management of Curfew e-Pass system additionally gives a notification board or something similar on which when and where a curfew will begin and end will be told. This will help people to know about the curfew beforehand and grab curfew passes before the curfew starts.

This system has just two modules the ADMIN module and USER module. The administrator has all the rights and will control all the activities in this system. Users can only view the pass on the site utilizing unique ID produced during the creation procedure and also get appointment for issuing pass from the admin. Warnings or notifications of the curfew will be provided beforehand or when announced.

**Keywords:** Curfew, software, computer, E-pass, Management ,etc

been clearly expressed, your application are sent to the authorities for examination. The assigned department can then notify you via associate degree SMS if your application has been approved. The SMS will offer a transfer link to induce the e-pass. This e-Pass has to be carried with you once you area unit movement as you'll be stopped by personnel to see your details and if you're permissible to travel throughout the imprisonment. take care to carry it with you in any respect times. The departments area unit fastidiously scrutinising applications and solely approving those who area unit real and emergency cases.

## 1.2 Database Design

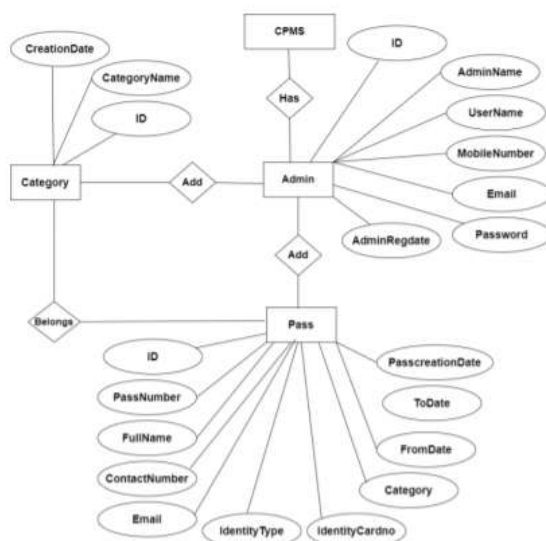
The data is processed and verified by the admin has portal that is username and arcanum operate. Admin then verifies the small print of the candidates Associate in Nursingd decides whether or not to issue an e-pass for the actual individual. this {can be} a whole e-pass generating Associate in Nursingd Management System wherever users from everywhere Republic of India can enter their details and build missive of invitation to come up

## I. INTRODUCTION

Curfew Pass Management system could be a web-based technology which will manage the records of pass that is issue by body and conjointly facilitate to supply on-line curfew e-pass to those who got to travel mandatory. Curfew Pass Management System is associate degree automatic system that delivers processing in terribly high speed in systematic manner. The code powered by PHP assures clear and economical services to the agency. This easy-to-operate system helps to access and modify user details, provides economical printing facility. The code is meant to supply Reliable and error free data. 1.1 Purpose and Scope Lockdown 4.0 looms over Bharat with little or no progress on the reduced range of cases. A fast spike in cases within the previous few weeks has brought Bharat to its unsettling and depressing range of quite one hundred thousand infected cases. The Centre has delegated some lockdown selections and announcements to State governments supported however their State is faring. Once all of your credentials are stuffed and your purpose has

with an e-pass throughout the Lockdown/Curfew amount. The information then endure bound process, verification for a in generation of Associate in Nursing e-pass. The information within the system needs to be keep and retrieved from info. coming up with the info is an element of system style. Knowledge components and knowledge structures to be keep are known at analysis stage. They're structured and place along to style the information storage and retrieval system. A info could be a assortment of interconnected knowledge keep with minimum redundancy to serve several users

quickly and with efficiency. The overall objective is to form info access straightforward, quick, cheap and versatile for the user. Relationships square measure established between {the knowledge|the info|the information} things and surplus data things square measure removed. Standardization is finished to urge an inside consistency of information and to own minimum redundancy and most stability. This ensures minimizing knowledge storage needed, minimizing possibilities of information inconsistencies and optimizing for updates. The MS Access info has been chosen for developing the relevant databases.



## II. SYSTEM OVERVIEW

The E-pass system provides choice to the Admin to pick out a class (Which is necessities and as directed by the state government) to assign a specific a selected style of e-pass turning into there to particular class. Admin has rights to add/remove a specific class. Admin portal has associate choice to add details of Admin himself and additionally provides all the access management to the admin. The admin will generate and issue a pass to a specific person. This is often associate access based mostly internet application developed mistreatment Php, MySQL, JQuery, mythical being and JavaScript, when the victorious generation of the e-pass the pass holders will verify their travel simply coming into the pass variety within the given input field. The pass will be verified globally from anyplace with the assistance of the pass Id. This helps the user and also the authorities to validate the e-pass with convenience. E-PASS

GENERATION AND MANAGEMENT SYSTEM throughout CURFEW could be a web-based technology that may manage the records of pass that is issue by body and additionally facilitate to supply on-line curfew e-pass to folks that have to be compelled to travel mandatory. Curfew Pass Management System is associate automatic system that delivers processing in terribly high speed in systematic manner. In CPMS we have a tendency to use PHP and MySQL info. This is often the project that keeps records of the pass that is issue by body. CPMS has one module i.e. admin.

Dashboard: during this sections, admin will concisely read the entire range of class and the way several pass are generated in at some point, yesterdays and last seven's days

Category: during this section, admin will manage class (add/update).

Add Pass: during this section, admin add pass.

Manage Pass: during this section, admin will

update pass and take print of that pass .  
 Reports: during this section admin will generate pass reports between 2 dates.  
 Search: during this section, admin will search a selected travel by pass range.  
 Admin may also update his profile, amendment the arcanum and recover the arcanum.  
 Brief info concerning homepage  
 User will visit home page and search pass details by coming into pass range.  
 Note: during this project MD5 coding methodology used.

The project methodology that used in the development of the system is the System Development LifeCycle (SDLC). SDLC is the process of understanding how an Information System (IS) can support business needs, designing the system, building it and delivering it to users. The SDLC is composing of four phases: Planning, Analysis, Design and Implementation.

The SDLC traces the history (life cycle) of a developing information system. Structured design methodology is Waterfall Development. With Waterfall Development, analyst and users proceed in sequence from one phase to the next can mapped out an evaluated.

### III. METHODOLOGY:

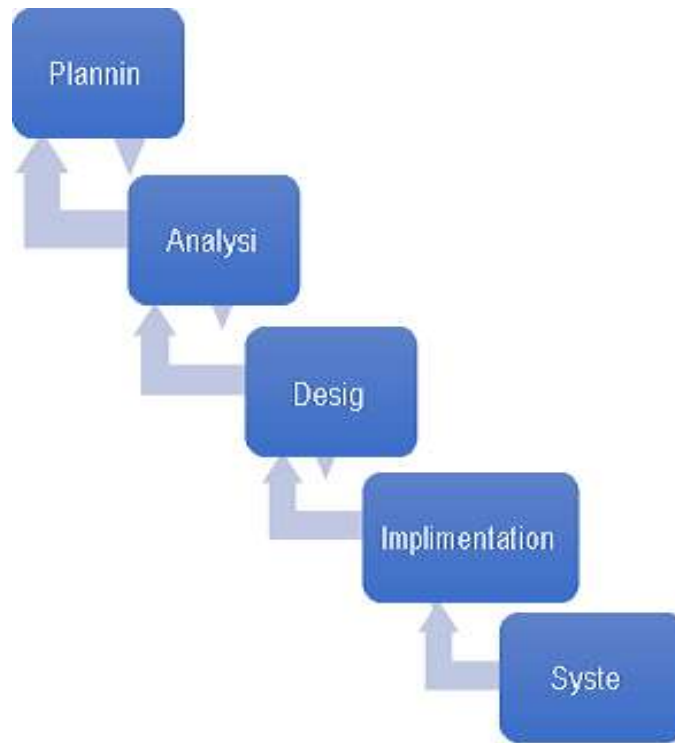


Fig. 1: The Waterfall Development Methodology

The approach that used in the system development methodology is the Waterfall Design. This is the implementation of SDLC step by step into the system development methodology.

#### 1. Planning:

In planning phase, to develop a new system which is a first step is to identify a need for the "Management of curfew e-pass system", and also plan how to develop the functional requirements of a system. This will include determining whether a business problem or opportunity exists, conducting a feasibility study to

determine the developing a project plan.

#### 2. Analysis:

In this phase, I have analysed considers the current systems and investigates any problems associated with it. Other sources of information about system and the new requirements would also be investigated at this time. The output from this stage would probably be no more than a set of notes.

#### 3. Design:

After the requirements have been

determined, the necessary specifications for the hardware, software, people, and data resources, and the information products that will satisfy the functional requirements of the proposed system can be determined. The design will serve as a blueprint for the system and helps detect problems before these errors or problems are built into the final system. I will create the system design by review the work with the scope to ensure the design meets the objective and requirement of the Management of curfew e-pass system.

#### 4. Implementation:

The implementation phase is described as those activities that begin when the system design has been completed. These phases are producing software code according to plan, analysis and system design that have been done. Coding and debugging are the act of creating the final system. The requirements documentation should be referred to throughout the rest of the system development process to ensure the developing project aligns with the needs and requirements or scope. The system also is tested to evaluate its actual functionality in relation to expected or intended functionality.

#### 5. System:

Last phase is system which is when development is complete and the system is in daily use. It is the longest life-cycle phase. System involves correcting errors which were not discovered in earlier stages of life cycle; improving the implementation of system units and enhancing the Management of curfew e-pass system services as new requirement are discovered.

### IV. LITERATURE SURVEY:

1. Sadaf Sheikh, GayatriShinde, MayuriPotghan, Tazeen Sheikh proposed application which will be used for the process of booking a pass for travel through local bus.
2. SnehalKalbhore , AshwiniMangulkar , Mrs. SnehalKulkarni proposed the various techniques for buying pass through their Smartphone application or website and introduced pass checker.
3. TusharDongare, Akshay Babar provided various techniques for buying pass through their smartphone application through GPS facility of android mobile so that passenger can easily get the list of station and he can easily buy pass
4. Ramadevi. K, Murugan. S, Bharath. S proposed a mobile pass application developed for android in which user procure pass in

future .Nehasandikar, ranedipti, sachinpanday proposed the various techniques for buying metro pass or local railway pass through their Smartphone application and introduced pass checker .

5. ManmohanSwarup, ChanchalSonkar, Vijendra Singh proposed a system through which railway pass booking is done through website and also from multimedia phones Wan Husani Wan Hussin,PaulCoulton proposed a system in which More consumer are expected to engage in mobile commerce transaction ,wider adoption of mobile.

### V. DISCUSSION:

This section discusses about the research that have been done for this project. The research includes the entire information that is related on the system proposed which focused on the research of e-management system. E-management is a quite big field to do research. It includes about the member personal details, profiles etc. At present some E-management system can find it in internet. For example, e-banking, e- business, e-booking are still in upgrade to be a best and user-friendly system.

Nowadays, a lot of people are busy with their work. Most of the time they are in front of the computer. Computer is a most important thing in our life. Internet is one of the parts too. Every house has interne because it will be easier for them to do some research, e-payment, e-banking, e-shop or any online booking to do a ticket reservation or an accommodation reservation.

With wide use of internet, a lot of online shopping, online business, and online booking website are developing to ease the user to do their work. User just need to use few fingers and then can buy all the things their need to. With these few fingers click user doesn't need to queue up for a long time to pay for the goods at the counter and also to but a pass.

### VI. CONCLUSIONS

E-PASS GENERATION AND MANAGEMENT SYSTEM throughout CURFEW has several powerful options and is actually over a "simple" schematisation tool. With its support of MDA (Model Driven Architecture), it's a lot of aimed toward folksexploitation UML in associate intensive manner and with some code generations objectives than for merely drawingdiagrams to document necessities. However, exploitation E-PASS GENERATION AND MANAGEMENT SYSTEM throughoutCURFEW even as a schematisation tool work fine, particularly on

Windows because the tool is constructed with city and may execute quicker than the Java-based tools. nowadays is laptop world wherever the items need to be done promptly that needs best resources and best ways. thanks to this inevitable demand, cybernation of every and each sector within the main stream is should, in order that it will be command itself within the race. Few eye catching options of our project square measure its simplicity, accuracy, and its user friendly interface. Our software system incorporates all the options and facilities provided by the Visual Studio software system. This project has been developed to manage the whole operating of the Curfew Pass body. Our software system simplifies and replaces all the manual effort and therefore the paper works done by the executive to a totally electronically surroundings. thus each the user and therefore the body square measure at their ease. The user is serviceable at his footsteps whereby he simply varieties within the request and he's simply a click away. we'd wish to convey our sincere feeling and due to all, UN agency stood as our backbone, in coming up with, information and serving to North American nation in capital punishment this project with success.

#### REFERENCES:

- <http://www.asp.net/mvc/tutorials/mvc-4/getting-started-with-aspnet-mvc4/intro-to-aspnet-mvc-4>
- <http://www.asp.net/web-pages/tutorials/basics/2-introduction-to-asp-net-web-programming-using-the-razor-syntax>
- <http://www.microsoft.com/en-us/download/details.aspx?id=30683>
- <https://www.sitepoint.com/php/>
- <http://forums.asp.net/t/1836200.aspx?Visual+Studio+2010+MVC4+and+NET+4+5>
- <http://stackoverflow.com/questions/1264870/7/asp-net-mvc-3-razor-jquery-cascading-dropdown-list-not-working>
- [http://www.asp.net/mvc/tutorials/older-versions/models-\(data\)/creating-model-classes-with-linq-to-sql-cs](http://www.asp.net/mvc/tutorials/older-versions/models-(data)/creating-model-classes-with-linq-to-sql-cs)
- <https://www.php.net/>
- <http://stackoverflow.com/questions/14961274/advanced-search-with-linq-to-ef>
- <http://www.jquery2dotnet.com/2013/06/bind-dropdownlist-in-mvc4-razor.html>
- <http://stackoverflow.com/questions/2851754/identity-insert-is-set-to-off-error>
- <http://stackoverflow.com/questions/4361742/prevent-partial-view-from-loading>
- <https://www.mysql.com/>
- <http://stackoverflow.com/questions/767694/asp-net-sending-an-e-mail>
- <http://stackoverflow.com/questions/1148857/asp-net-mvc-displaying-database-table>
- <https://www.php.net/>
- <http://www.aspsnippets.com/Articles/Select-and-Upload-Multiple-Files-Gmail-Style-using-JQuery-and-ASP.Net.aspx>
- <http://getbootstrap.com/>
- <http://getbootstrap.com/getting-started/>
- <https://www.irjet.net/archives/V8/i4/IRJET-V8I4787.pdf>