

Analysys of Brain Tumour and MRI under Image Classification

Mohammad MoinRaza Khan

Submitted: 01-04-2021

Revised: 11-04-2021

Accepted: 14-04-2021

ABSTRACT-With the advent of science and technology the field of diagnostics is much easier with the help of various imaging modalities such as MRI or CT scan. These images are becoming increasingly important with increasing demand due to a number of helpful features such as these automatic, accurate, reliable, quick and effective diagnostics in a very short time that can provide a clearer view of the story than human eyes. A brain tumor is considered to be the most serious cancer. The study found that Brain Tumor was the second leading cause of cancer-related deaths in men aged 20 to 39, and the fifth leading cause of cancer in women of the same age group. Brain tissue is painful, and can lead to certain diseases if not treated properly. Diagnosis of a tumor is a very important part of the treatment process as it plays a very important role in its treatment. diagnosis plays an important role in detecting malignant and malignant tissue. The main reason for increasing the number of cancer patients worldwide is ignorance about early detection of the disease.

Keywords:CTscan images, MRI, SVM, FCNN

I. INTRODUCTION

Image separation is the division of an image into an area and then the region varies according to the combination of the whole image. It has a single clear image with a rear circuit inside a simple container an area that cannot be fully compacted without being bound by certain border pixels. Its simple functionality focused on its design is known to users of the forgiveness process is a very important part. In the smooth transition of this reason the position of the arrangement within the actions of the general separation is required. Separation is a very sensitive task within the study of image analysis. Although the lost information model contains healthy performances within the existing BraTS variety into a single group of Fully Convolutional Networks that show and validate together internal conditions for accuracy and computer speed As they create a single image image forwards. An advantage of FCN's ability to have a global position focused on clarity.

Investigators are proposing the structure of the FCN architecture using 3D combinations with a small wish text, because the architecture is very different from the square method, leading to aggressive results.

This paper attempts to identify and identify tissue in brain images that scan CT. The main reason for identifying brain tissue is to provide appropriate clinical diagnostic drugs. And another second goal is to provide an algorithm that confirms the existence of a tumor by combining several procedures to provide complete evidence of a tumor detection method in brain CT-scan images. The procedures used are sampling, contrast alteration, image negation, subtraction of images, threshold degradation, dilation and visualization of tumors.

II. RELATED WORK

Natarajan P. et.al's paper "Brain Tumor Detection using MRI Brain Images" states that any type of tumor that enters the brain has major brain tissue. Major brain tissues, including brain cells, meninges, nerves, or glands, can start from anywhere in the brain. Depending on the tumor, the tumor can directly kill brain cells. These injuries can be seen by growing inflammation, putting pressure on other parts of the brain and increasing pressure within the skull. A metastatic brain tumor can spread to the brain from any part of the body.

According to R. Rajeswari, P. Anadhakumar, in "Image segmentation and identification of brain tumor using FFT techniques of MRI images", published in ACEEE International Journal on Communication, Vol. 02 "a common definition of a brain tumor includes neoplasms from the brain, meninges and pituitary or intracranial osseous tissue that may indirectly affect brain tissue or cells.

Proposed system and Working of SVM

In the proposed model in place of the **NEURAL NETWORKS** prediction algorithm. We use the **SVM Classifier** to predict image usage data in MATLAB. SVM's concept is simple: The

algorithm creates a line or hyperplane that divides data into categories. This can solve both direct and indirect problems and work well for other practical issues. Neural networks are out of line while Vector Machine Support is a straightforward separator. CNN works well with Visual Image Recognition, where SVM is widely used in segmentation problems. CNN usually increases the complexity of the model by adding more layers (hidden layers) but in increasing SVM increasing model complexity is not possible. The SVM or Support Vector Machine is a straightforward model for setback and separation issues.

The SVM model is a special type of model that deals with the analysis of hyper planes that can be used effectively in both compatible and incompatible data sets. In addition to performing line spacing, SVMs can perform offline spacing effectively, which includes the input of the input map in high feature spaces.

An MRI scan of the system provides a short-term brain tumor. Image obtained but did not remove the tumor from the image. Therefore, this imaging analysis is necessary to determine the size of the tumor in terms of size.

Part of the tumor from the CT scan of the brain is found in the current solution for removing the brain tumor from CT scan images. The proposed solution does the same thing as the previous model which uses simpler image processing techniques to inform the user about plant details. Methods of finding the context include noise reduction and image sharpening as well as basic morphological functions, erosion and stiffness. In addition to this several other functions included are similar to the type of tumor, i.e., normal deviation, entropy, smoothness, kurtosis, skewness, and so on. Removing the background and its ugliness from various photo sets leads to a different image of the plant. The difference between the proposed solution and the existing solution is to set the tumor line and the c-label with its boundary which provides us with tumor-related information that can help better identify if a diagnosis is made. This method helps to determine the size of the plant, its shape and location. It helps both medical staff and the patient understand the complexity of the tumor.

SVM works very well without a team. It forces at very high altitudes. It is compelling in cases where the number of ratings is significantly higher than the number of tests. It uses a subset preparation to focus on the volume selection (called bolster vectors), so it has the same memory capacity.

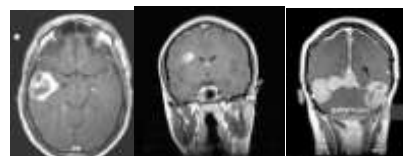


Fig. Image of Brain Tumors

The algorithm is a set of image processing processes required. The collection of noise-absorbing material associated with morphological performance that ultimately results in a clear image of the plant after passing the bypass filter is the main concept behind the proposed algorithm. The collection of morphological activities used will determine the clarity and prominence of the tumor image.



Fig. Initial GUI

The GUI was developed using the MATLAB software that provides a proposed application of the contour structure of a plant in the selected brain image and its appearance. In addition to managing the code, medical staff can select a CT image and analyze the extracted tumor with its contour and c-label options.



Fig. Selection of MRI Image

The click-through display contains zoom options Zoom in, zoom-out, link information pointer, and print the selected image.

The purpose of this activity is to bring some useful data in a simple way to the users, especially the medical staff treating the patient. The purpose of this paper is to determine the algorithmic-compliant system that can lead to image growth in imaging brain imaging. The

resulting diagram will be able to provide details such as lump scale, size and location, plot line, and plant label c, and its boundary provides us with tumor-related information that may be helpful in some cases, providing a clear basis for staff to determine treatment procedures. The GUI is accessible using the drag and drop used in MATLAB

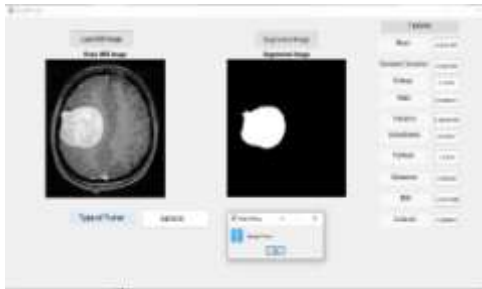


Fig. Type of Tumor- BENIGN



Fig. Type of Tumor- MALIGNANT

CT scan of the brain and its image in such a way that it is difficult for everyone to see. People are more likely to know color images that are higher than black and white images, therefore, we tend to be colorless to create an image that is not difficult enough for the patient and medical staff to understand. The structure of the tumor contour with the c-label and its border is designed to provide 3D representation from a 2D image using different colors for different levels of intensity. An easy-to-use interface has also been created that helps medical professionals achieve the above goal without having to enter a code.

All in all, the SVM machine accurately determined the Tumor, and the result was much better than the previous methods used.

REFERENCES

[1]. P. Natrajan, Debsmita Ghosh, Kenkre Natasha Sandeep, Sabiha Jilani, "Detection of Tumor in Mammogram Images using extended Local Minima Threshold," International Journal of Engineering and Technology, Vol. 5, No. 3, Jun-Jul 2013.

- [2]. X. Zang, J. Yang, D. Weng, Y. Liu and Y. Wang, "A novel anatomical Structure segmentation method of CT head images," International Conferences on complex medical Engineering, 2010.
- [3]. X. Zheng, Z.P. Cai, Z. Li and H. Gao a study on application aware scheduling in wireless network, IEEE trans. mob. comput., vol 16 no. 7.
- [4]. A. Padma and R. Sukanesh, "Automatic Classification and segmentation of brain tumor in CT images using optimal dominant gray level run length texture features," International journal of Advanced Computer Science and Applications, 2011.
- [5]. P. Dhanalakshmi, T. Kanimozhi, "Automated Segmentation of Brain Tumor using K-Means Clustering and its area calculation," IJAEEE, 2013



**International Journal of Advances in
Engineering and Management**
ISSN: 2395-5252



IJAEM

Volume: 03

Issue: 04

DOI: 10.35629/5252

www.ijaem.net

Email id: ijaem.paper@gmail.com